

Stantec Consulting Inc.
 Suite 100, 6980 Sierra Center Parkway
 Reno NV U.S.A.
 89511
 Tel. 775.850.0777
 Fax. 775.850.0787
 www.stantec.com

Stantec

Copyright Reserved

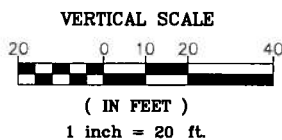
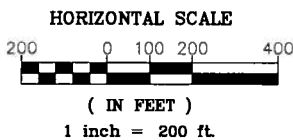
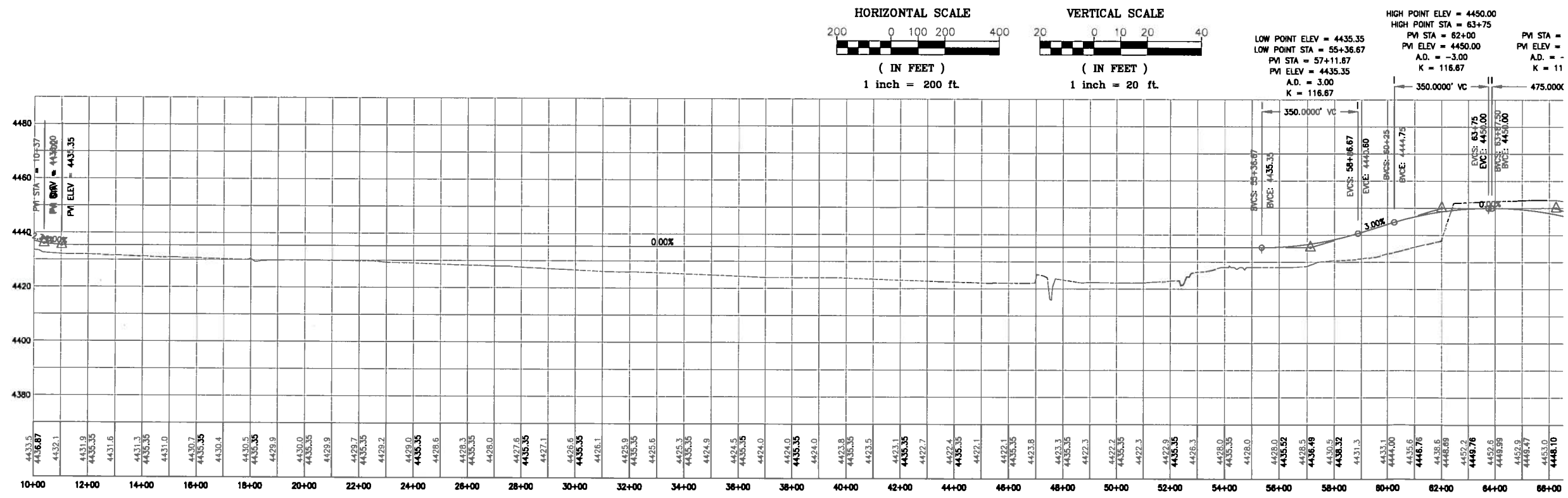
The Contractor shall verify and be responsible for all dimensions. DO NOT scale the drawing - any errors or omissions shall be reported to Stantec without delay.
 The Copyrights to all designs and drawings are the property of Stantec. Reproduction or use for any purpose other than that authorized by Stantec is forbidden.

Consultants

Legend

- MARSH - SEASONAL WETLANDS
- OPEN WATER MARSH
- RTC 7-25-37 ALIGNMENT
- RTC 34 ALIGNMENT
- RTC 40 ALIGNMENT

Notes



HIGH POINT ELEV = 4450.00
 HIGH POINT STA = 63+75
 PM STA = 62+00
 PM ELEV = 4450.00
 A.O. = -3.00
 K = 116.67

LOW POINT ELEV = 4435.35
 LOW POINT STA = 55+36.67
 PM STA = 57+11.67
 PM ELEV = 4435.35
 A.O. = 3.00
 K = 116.67

BVC: 55+36.67
 EVC: 58+16.67
 PVI: 56.717

BVC: 60+25
 EVC: 63+75
 PVI: 62+00

Revision	By	Appd.	YY.MM.DD

Issued	By	Appd.	YY.MM.DD

File Name:	Desn.	Chkd.	Desgn.	YY.MM.DD

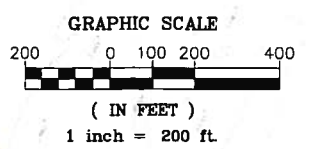
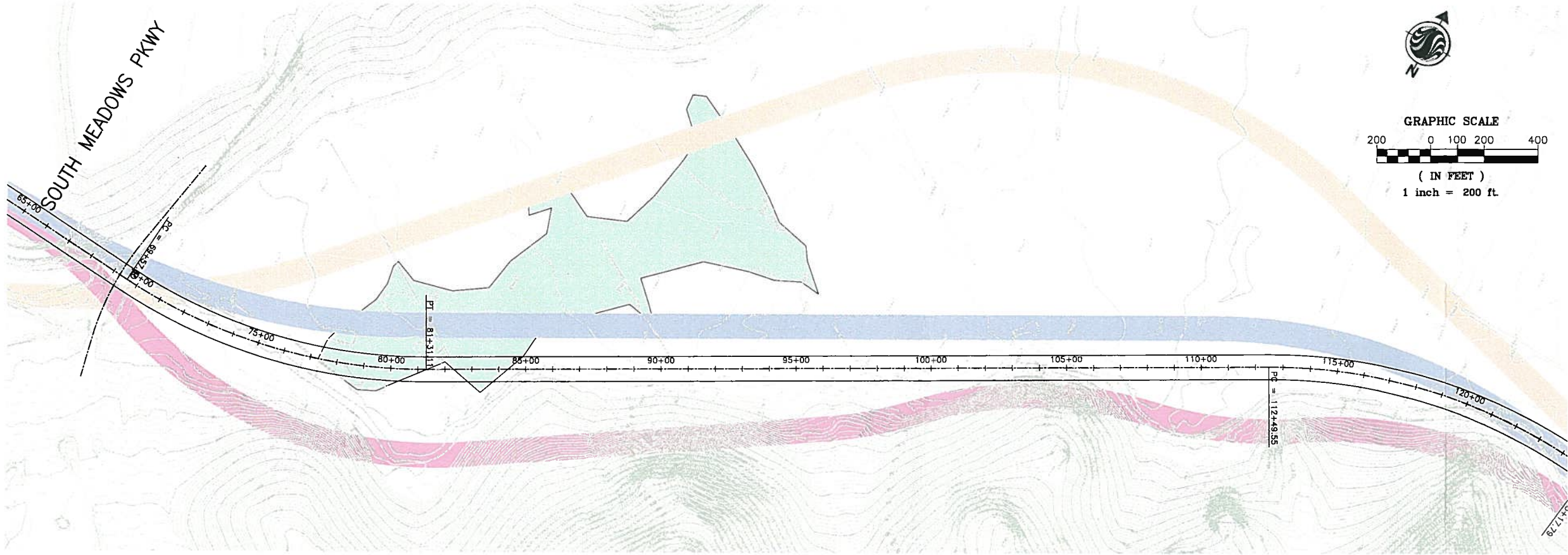
Client/Project
 REGIONAL TRANSPORTATION COMMISSION
 OF WASHOE COUNTY
 SOUTHEAST CONNECTOR
 PLAN LINE STUDY
 Reno, Sparks NV U.S.A.

Title
 RECOMMENDED SOUTHEAST
 CONNECTOR ALIGNMENT
 RTC 34-40, FIGURE 7

Project No.	Scale
180101098	SEE SHEET

Drawing No.	Sheet	Revision
EX-1	1 of 6	0

15:30:00 11/27/2018 11:27:52 AM By: C:\Users\...
 ORIGINAL SHEET - ARCH D



Stantec Consulting Inc.
Suite 100, 6980 Sierra Center Parkway
Reno NV U.S.A.
89511
Tel. 775.850.0777
Fax. 775.850.0787
www.stantec.com

Copyright Reserved
The Contractor shall verify and be responsible for all dimensions. DO NOT scale the drawing - any errors or omissions shall be reported to Stantec without delay.
The Copyrights to all designs and drawings are the property of Stantec. Reproduction or use for any purpose other than that authorized by Stantec is forbidden.

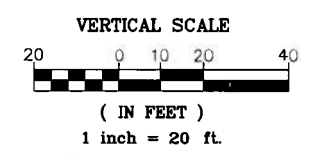
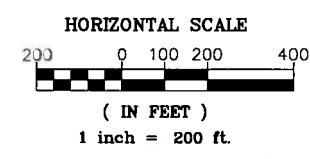
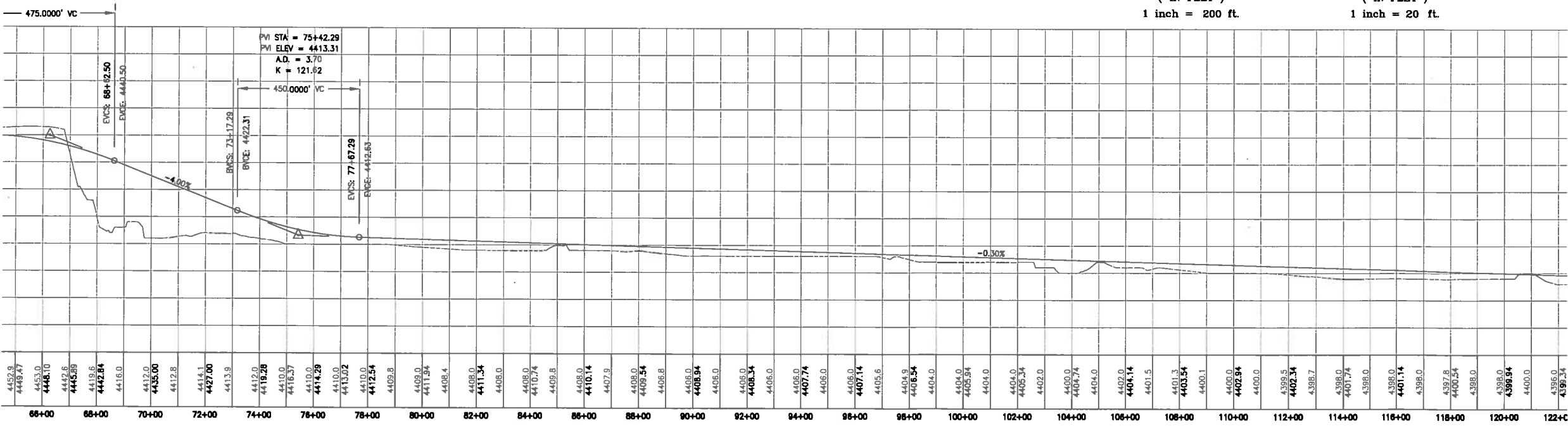
Consultants

Legend

- MARSH - SEASONAL WETLANDS
- OPEN WATER MARSH
- RTC 7-25-37 ALIGNMENT
- RTC 34 ALIGNMENT
- RTC 40 ALIGNMENT

Notes

PM STA = 66+25
PM ELEV = 4450.00
A.D. = -4.00
K = 118.75



\\santec\projects\180101098\Drawings\Sec_5.dwg
 2008-11-07 10:28 AM by: dcarson

Revision	By	Appd.	YY.MM.DD

Issued	By	Appd.	YY.MM.DD

File Name:	Des.	Chd.	Orgn.	YY.MM.DD

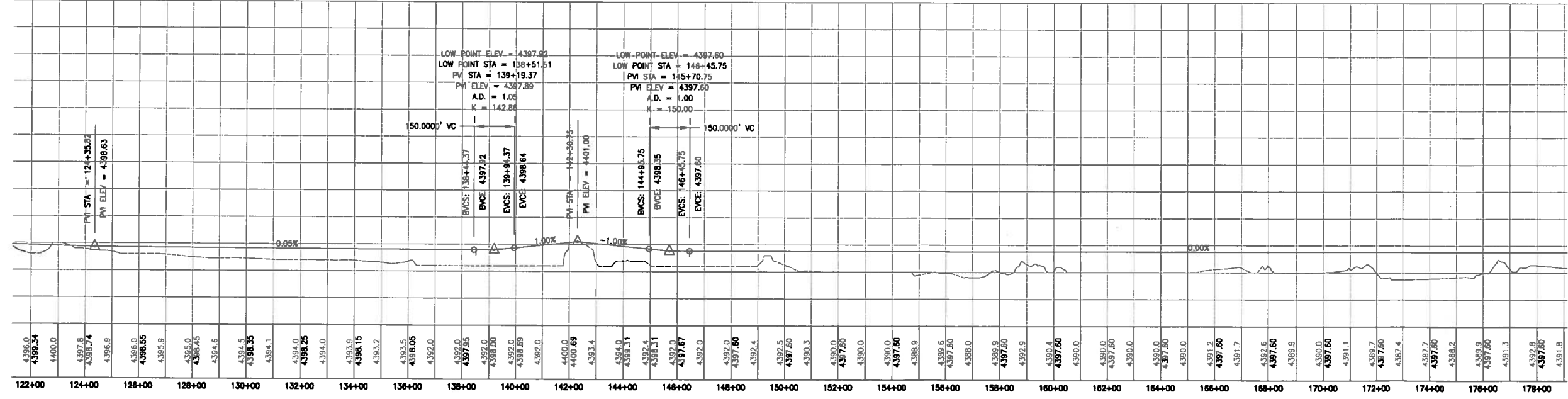
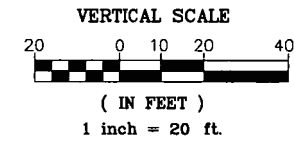
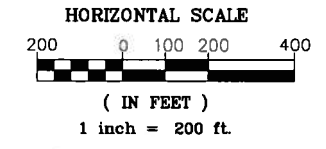
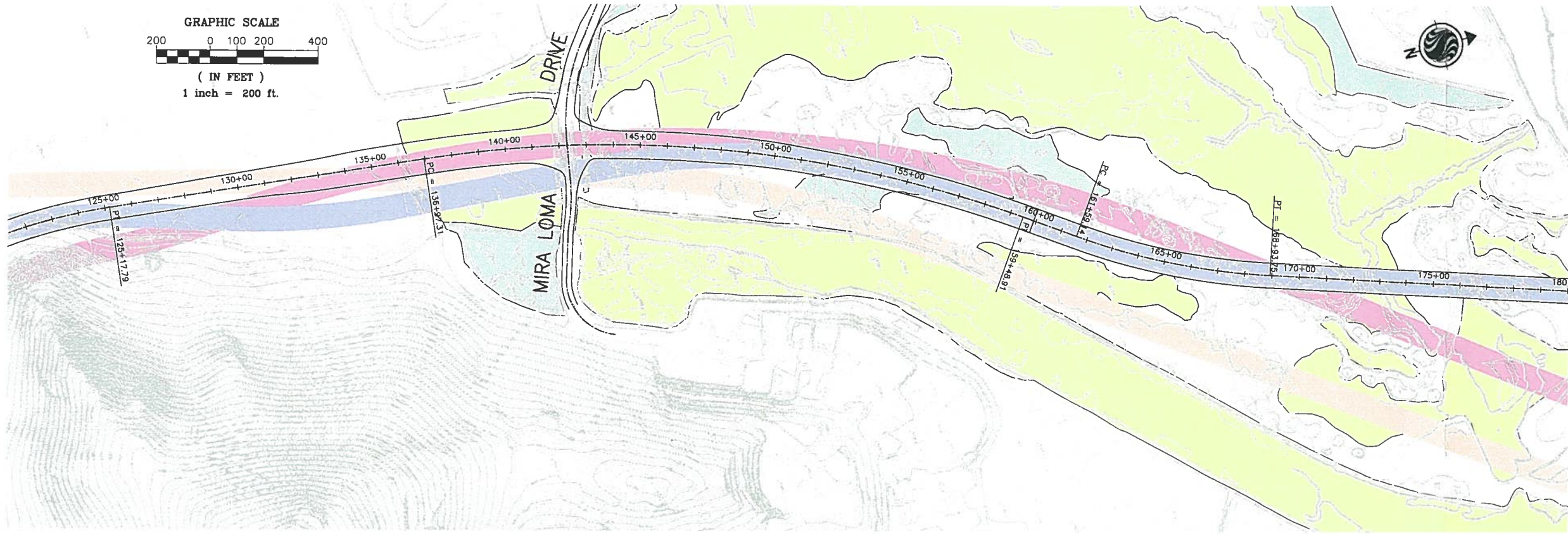
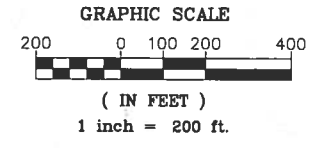
Permit-Seal

Client/Project
REGIONAL TRANSPORTATION COMMISSION
OF WASHOE COUNTY
SOUTHEAST CONNECTOR
PLAN LINE STUDY
Reno, Sparks NV U.S.A.

Title
RECOMMENDED SOUTHEAST
CONNECTOR ALIGNMENT
RTC 34-40, FIGURE 8

Project No. 180101098
Scale SEE SHEET

Drawing No. EX-2
Sheet 2 of 6
Revision 0



Startec Consulting Inc.
Suite 100, 6980 Sierra Center Parkway
Reno NV U.S.A.
89511
Tel. 775.850.0777
Fax. 775.850.0787
www.startec.com

Copyright Reserved
The Contractor shall verify and be responsible for all dimensions. DO NOT scale the drawing - any errors or omissions shall be reported to Startec without delay.
The Copyrights to all designs and drawings are the property of Startec. Reproduction or use for any purpose other than that authorized by Startec is forbidden.

- Legend**
- MARSH - SEASONAL WETLANDS
 - OPEN WATER MARSH
 - RTC 7-25-37 ALIGNMENT
 - RTC 34 ALIGNMENT
 - RTC 40 ALIGNMENT

Notes

Revision	By	Appd.	YY/MM/DD

Issued	By	Appd.	YY/MM/DD

File Name:	Des.	Chd.	Dgn.	YY/MM/DD

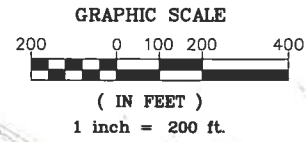
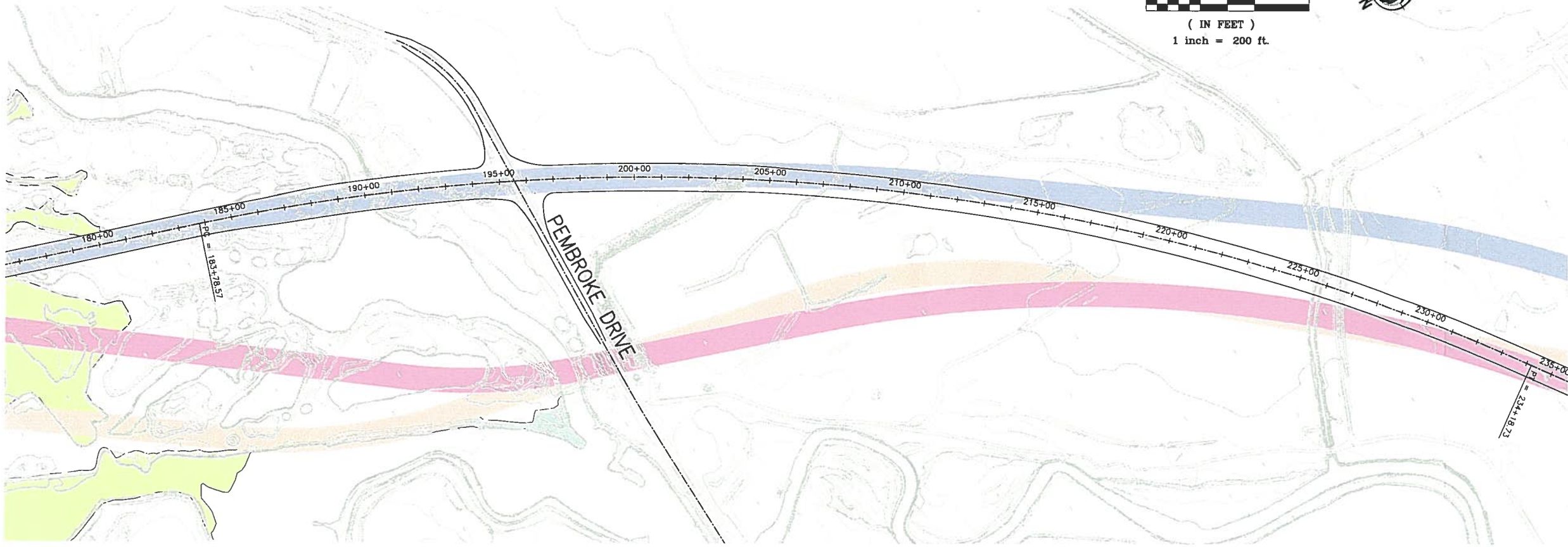
Client/Project
REGIONAL TRANSPORTATION COMMISSION OF WASHOE COUNTY
SOUTHEAST CONNECTOR PLAN LINE STUDY
Reno, Sparks NV U.S.A.

Title
RECOMMENDED SOUTHEAST CONNECTOR ALIGNMENT RTC 34-40, FIGURE 9

Project No. 180101098
Scale SEE SHEET

Drawing No.	Sheet	Revision
EX-3	3 of 6	0

S:\Users\jw\My Documents\180101098\Sheets\FIG 9.dwg
2008-11-10 10:24 AM by: JWC/BSP



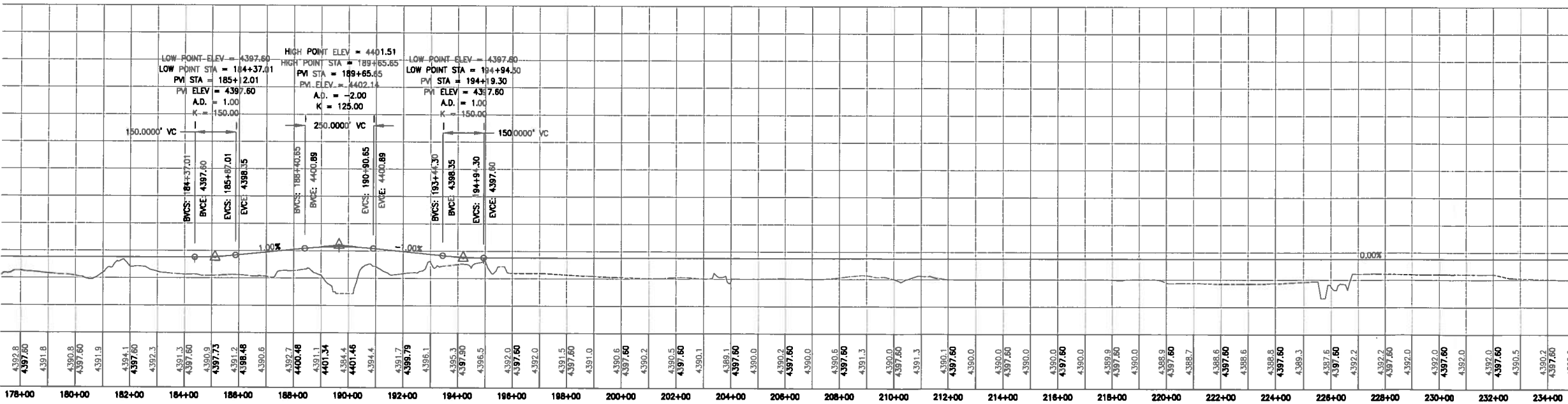
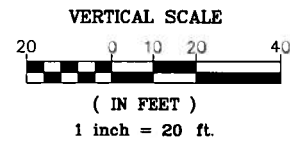
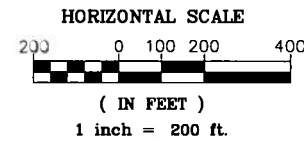
Stantec Consulting Inc.
 Suite 100, 6980 Sierra Center Parkway
 Reno NV U.S.A.
 89511
 Tel. 775.850.0777
 Fax. 775.850.0787
 www.stantec.com

Copyright Reserved
 The Contractor shall verify and be responsible for all dimensions. DO NOT scale the drawing - any errors or omissions shall be reported to Stantec without delay.
 The Copyrights to all designs and drawings are the property of Stantec. Reproduction or use for any purpose other than that authorized by Stantec is forbidden.

Consultants

- Legend**
- MARSH - SEASONAL WETLANDS
 - OPEN WATER MARSH
 - RTC 7-25-37 ALIGNMENT
 - RTC 34 ALIGNMENT
 - RTC 40 ALIGNMENT

Notes



Revision	By	Appd.	YY.MM.DD

Issued By Appd. YY.MM.DD

File Name: _____

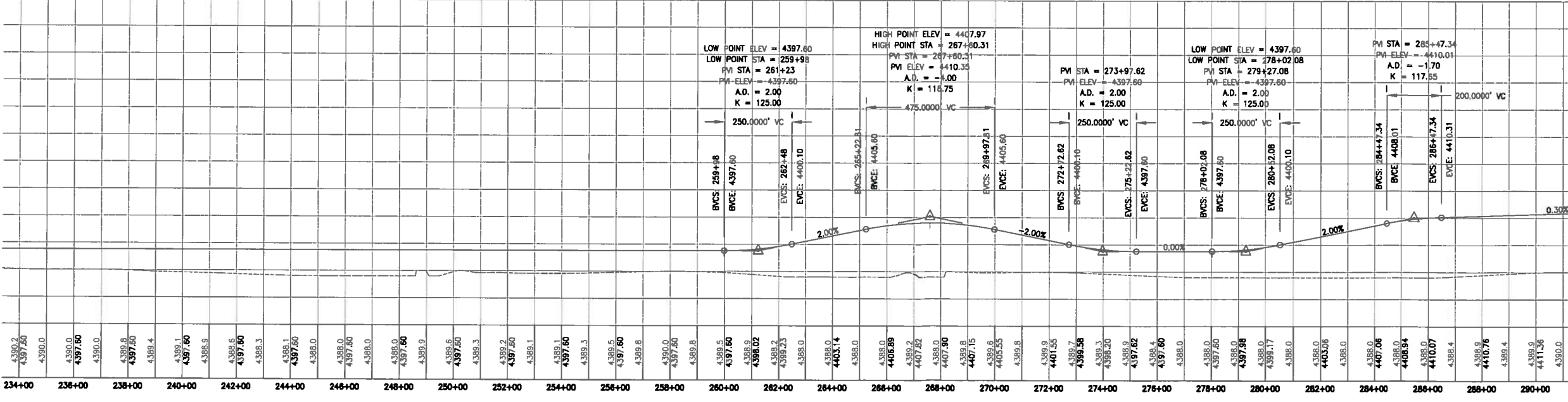
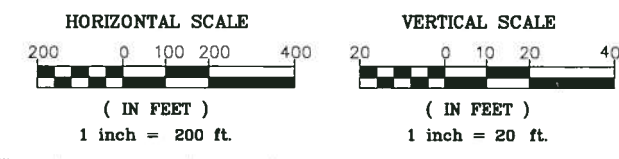
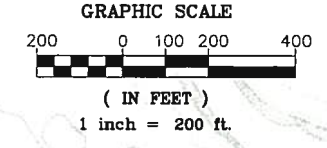
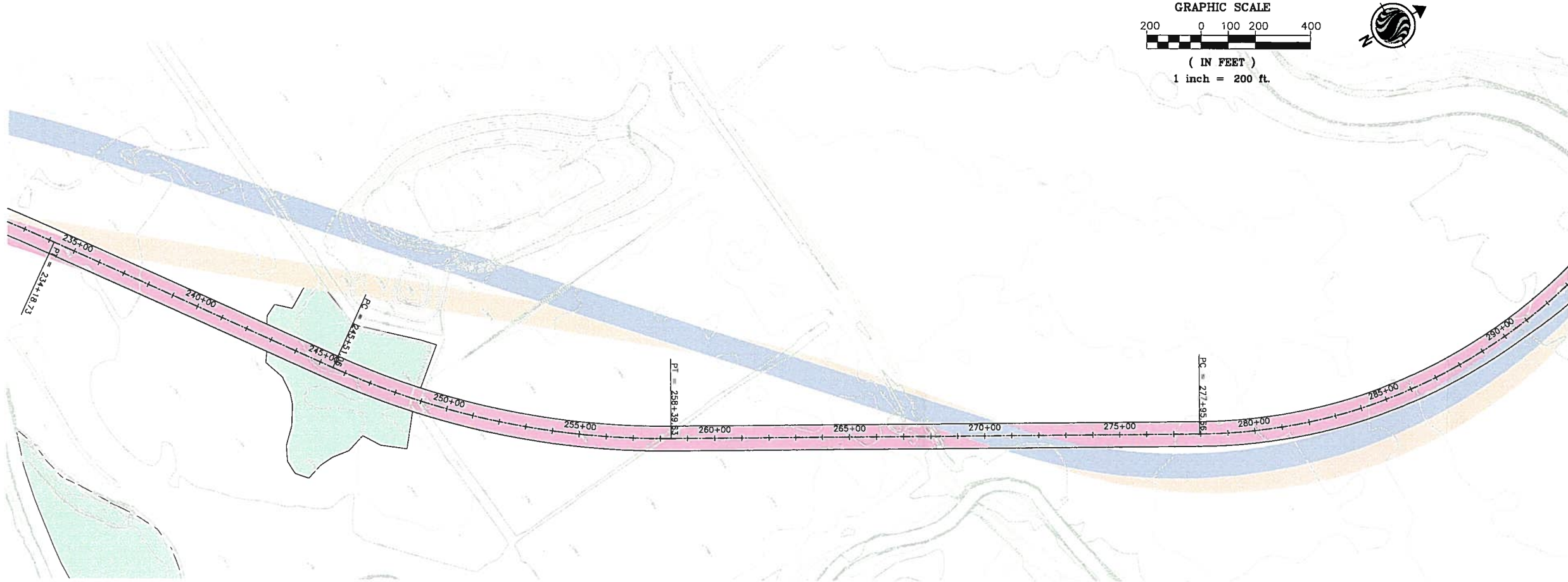
Permit Seal: _____

Client/Project
 REGIONAL TRANSPORTATION COMMISSION
 OF WASHOE COUNTY
 SOUTHEAST CONNECTOR
 PLAN LINE STUDY
 Reno, Sparks NV U.S.A.

Title
 RECOMMENDED SOUTHEAST
 CONNECTOR ALIGNMENT
 RTC 34-40, FIGURE 10

Project No. 180101098	Scale SEE SHEET
Drawing No.	Sheet 4 of 6
Revision 0	

15:00001\Projects\180101098\Drawings\Plan Line Study\Sheet 4 of 6.dwg
 2024-11-29 10:30 AM by: C:\Users\...



V:\0001\0001\0001\0001.dwg
 2008-11-07 10:28:00 By: C:\Users\...



Stantec Consulting Inc.
 Suite 100, 6980 Sierra Center Parkway
 Reno NV U.S.A.
 89511
 Tel. 775.850.0777
 Fax. 775.850.0787
 www.stantec.com

Copyright Reserved
 The Contractor shall verify and be responsible for all dimensions. DO NOT scale the drawing - any errors or omissions shall be reported to Stantec without delay.
 The Copyrights to all designs and drawings are the property of Stantec. Reproduction or use for any purpose other than that authorized by Stantec is forbidden.

Consultants

- Legend**
- MARSH - SEASONAL WETLANDS
 - OPEN WATER MARSH
 - RTC 7-25-37 ALIGNMENT
 - RTC 34 ALIGNMENT
 - RTC 40 ALIGNMENT

Notes

Revision	By	Appd.	YY.MM.DD

Issued: _____ By: _____ Appd.: _____ YY.MM.DD
 File Name: _____
 Permit Seal: _____
 Den. Chid. Desn. YY.MM.DD

Client/Project
 REGIONAL TRANSPORTATION COMMISSION
 OF WASHOE COUNTY
 SOUTHEAST CONNECTOR
 PLAN LINE STUDY
 Reno, Sparks NV U.S.A.

Title
 RECOMMENDED SOUTHEAST
 CONNECTOR ALIGNMENT
 RTC 34-40, FIGURE 11

Project No.	Scale	
180101098	SEE SHEET	
Drawing No.	Sheet	Revision
EX-5	5 of 6	0



Startec Consulting Inc.
 Suite 100, 6980 Sierra Center Parkway
 Reno NV U.S.A.
 89511
 Tel. 775.850.0777
 Fax. 775.850.0787
 www.startec.com

Startec

Copyright Reserved

The Contractor shall verify and be responsible for all dimensions. DO NOT scale the drawing - any errors or omissions shall be reported to Startec without delay.
 The Copyright to all designs and drawings are the property of Startec. Reproduction or use for any purpose other than that authorized by Startec is forbidden.

Consultants

Legend

- MARSH - SEASONAL WETLANDS
- OPEN WATER MARSH
- RTC 7-25-37 ALIGNMENT
- RTC 34 ALIGNMENT
- RTC 40 ALIGNMENT

Notes

Revision	By	Appd.	YY.MM.DD

Issued	By	Appd.	YY.MM.DD

File Name:	Des.	Chd.	Dgrn.	YY.MM.DD

Permit-Seal

Client/Project
 REGIONAL TRANSPORTATION COMMISSION
 OF WASHOE COUNTY
 SOUTHEAST CONNECTOR
 PLAN LINE STUDY
 Reno, Sparks NV U.S.A.

Title
 RECOMMENDED SOUTHEAST
 CONNECTOR ALIGNMENT
 RTC 34-40, FIGURE 12

Project No.	Scale
180101098	SEE SHEET

Drawing No.	Sheet	Revision
EX-6	6 of 6	0

